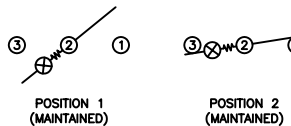


SCHMATIC



SPECIFICATIONS

FUNCTION:
 1P1T OFF-ON

RATINGS:
 ANSI/UL 1054 and CAN/CSA C22.2 No. 55 (E194579):
 20A 125VAC [cURus]
 16A 250VAC [cURus]
 3/4HP 125/250VAC [cURus]

ANSI/UL 1054 (233821):
 16A 250VAC [CSAus]
 3/4HP 125/250VAC [CSAus]

EN 61058-1:2002 and DIN/VDE 0630:2003-03 (40017926):
 16(4)A 250V~ 1E4 μ T85/55 [ENEC10, VDE]
 10(2)A 250V~ 5E4 μ T85/55 [ENEC10, VDE]
 20(8)A 250V~ 1E4 μ T125/55 [ENEC10, VDE]

ILLUMINATION VOLTAGE:
 250V

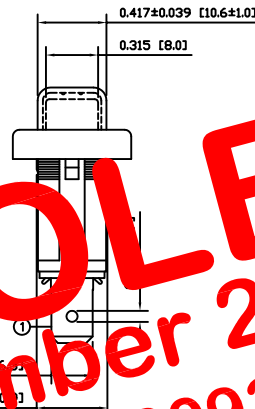
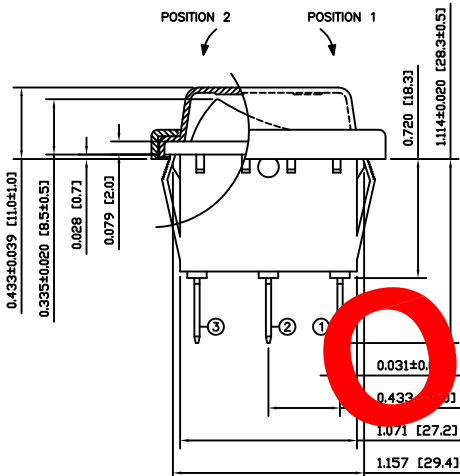
CONTACT RESISTANCE:
 Initial: 20mΩ Max.

INSULATION RESISTANCE:
 100MΩ Min. at 500VDC

DIELECTRIC STRENGTH:
 1,000VAC for 1 Minute

ELECTRICAL LIFE:
 6,000 Cycles [cURus, CSAus]
 10,000 Cycles [ENEC10, VDE: 16(4)A 250V~]
 50,000 Cycles [ENEC10, VDE: 10(2)A 250V~]

TEMPERATURE:
 Operating: -20°C to 65°C [cURus, CSAus]
 Operating: -20°C to 125°C [ENEC10, VDE]
 Operating: -20°C to 85°C [ENEC10, VDE]



OBSOLETE
 November 2017
 PCR 23093

COLORS AND MARKINGS

BODY:
 Black

ACTUATOR:
 Transparent Red

MARKINGS:
 None

MARKING COLOR:
 None

FRAME:
 Black

MATERIALS

BODY:
 Polyamide 6/6 (PA66), UL94 V-2

ACTUATOR:
 Polycarbonate (PC), UL94 V-2

LAMP CARRIER:
 Polyamide 6/6 (PA66), UL94 V-2

LAMP:
 Neon Bulb

LAMP SPRING:
 Steel

SPRING:
 Steel

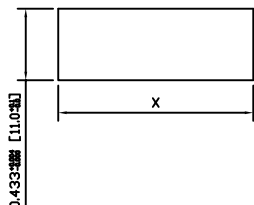
CONTACTS:
 Silver Plated Copper

TERMINALS:
 Silver Plated Copper
 Silver Plated Brass

Cap:
 Polyvinyl Chloride (PVC)

FRAME:
 Polyamide 6/6 (PA66), UL94 V-2

SUGGESTED PANEL CUTOUT



| PANEL THICKNESS | X |
|-------------------------|--------------|
| 0.030~0.049 [0.75~1.25] | 1.189 [30.2] |
| 0.049~0.079 [1.25~2.00] | 1.201 [30.5] |

| | | | |
|--------------------------|------|----------|-----|
| ACTUATOR | A | 09/07/06 | CAB |
| BODY | A | 09/07/06 | CAB |
| COLORS | A | 09/12/09 | CAB |
| SPECIFICATIONS REFERENCE | A | 09/06/26 | CAB |
| REV. | DATE | BY | |

THE INFORMATION CONTAINED IN THIS DOCUMENT IS PROPRIETARY TO E-SWITCH AND IS NOT TO BE COPIED OR TRANSFERRED

| | | | |
|-----------------|-------|----------|----------|
| INITIAL RELEASE | 18992 | 10/02/19 | CAB |
| DESCRIPTION | PCR | DATE | DRAWN BY |

| | |
|---------------------------|----------------------|
| DIMENSIONS | INCHES [MILLIMETERS] |
| GENERAL TOLERANCES | ±0.008 [±0.2] / ±1' |
| SCALE | DRAWING NOT TO SCALE |
| PROJECTION | |

RB141D1000-117/ACC-F01-1

| | | |
|-----------------------------|---------------------------|---------------|
| ITEM NUMBER 14-RB1S00037 | DATE FEBRUARY 19, 2010 | REVISION A |
|-----------------------------|---------------------------|---------------|